



**RIMECK®**

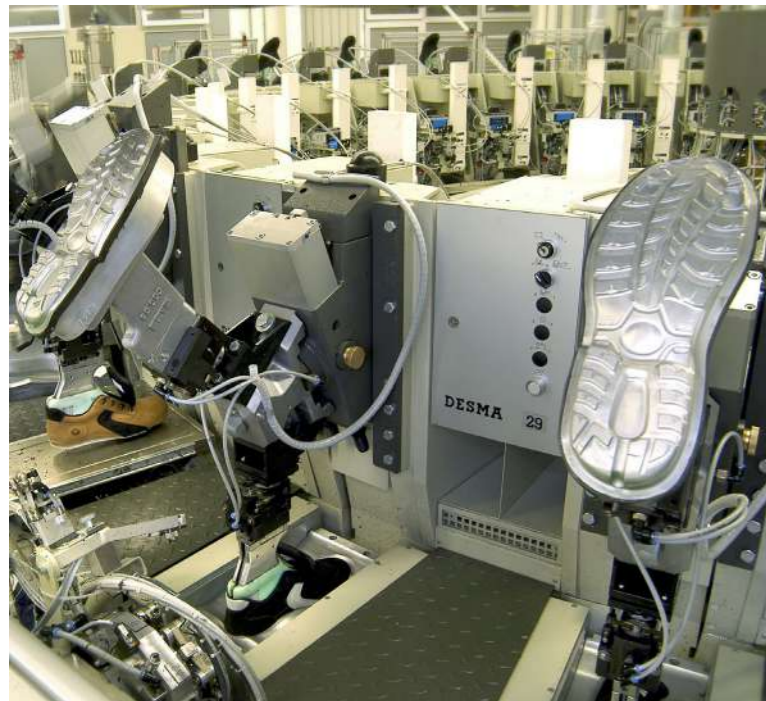


**BATA INDUSTRIALS**  
THE SAFETY SHOE

# **BATA INDUSTRIALS**

*safety footwear and workwear collection*

# RIMECK® INTRODUCES BATA INDUSTRIALS SAFETY SHOES AND WORKWEAR



**BATA INDUSTRIALS**  
THE SAFETY SHOE

Bata Industrials is the Dutch division of the world's largest footwear company, Bata Shoe Organization, and specialises in the production of safety footwear. Highly automated manufacturing process and advanced inventory management techniques allow Bata Industrials to make their shoes faster, at higher quality, and with more flexibility. The company's high-tech manufacturing is combined with state-of-the-art materials, advanced technology and the latest biomechanical knowledge.

The goal of Bata Industrials is to develop anatomically optimal footwear that meets the needs of the European market and suits the widest range of customers. Collaboration with SATRA, the leading research centre for development of footwear, has enabled us to make high quality safety shoes which also conform to the strictest orthopaedic standards. All footwear is certified according to the European Standard EN ISO 20345:2011 or EN ISO 20347:2012



Photo: RIMECK® workwear: Shorts WOODY W05, Polo Shirt HV RUNWAY 2V9

### ► PWR 309 W<sup>B14</sup>

Low boots unisex



Upper material - water resistant full grain leather lining - Cool Comfort®

sizes: 38 - 48

width: W

colour: B1

industry: agriculture, heavy, construction, chemical, electrotechnical, food, automotive

standard: EN ISO 20345:2011



### ► PWR 312 W<sup>B17</sup>

### ► PWR 312 XW<sup>B18</sup>

Ankle boots unisex



Upper material - water resistant full grain leather lining - Cool Comfort®

sizes: 38 - 48

width: W, XW

colour: B1

industry: agriculture, heavy, construction, chemical, electrotechnical, food, automotive

standard: EN ISO 20345:2011



> safety footwear S3

> protective steel toecap

> anti-penetration steel midsole

> technology Walkline® 2.0

> Tunnel system®

> E - energy absorption in the heel area

> SRC - slip resistant sole - PU/rubber TriTech Plus®

> CI, HI - insulation against cold and heat

> HRO - resistance to hot contact until 300 °C

> FO - resistance to fuel oil

> A - antistatic

> ESD - electro static discharge

> WRU - water resistant upper



### TUNNEL SYSTEM®

This system ensures energy absorption and stability in the heel area, absorbs walking impacts, protects your joints and keeps you in an upright position. This outsole features a distinctive and sharp curvature called a tunnel which distributes weight over a larger surface. The weight of the user has no impact on the function of the shoe.



# WALKLINE® 2.0/EVO



A support system for walking optimisation that prevents any health complications caused by unsuitable safety shoes. The WALKLINE® 2.0 system ensures natural movement and comfortable walking even in strenuous working conditions.



WALKLINE® EVO is an ergonomic system which offers long-term comfort, an excellent soles' grip and thanks to a premium insole it stimulates a proper movement of the foot and provides outstanding shock absorption. Natural shape with the right fixation and bent ensure maximum flexibility and support.

## SHAPE

The shoe axis is adapted to the foot axis to fully accommodate biomechanical functions.

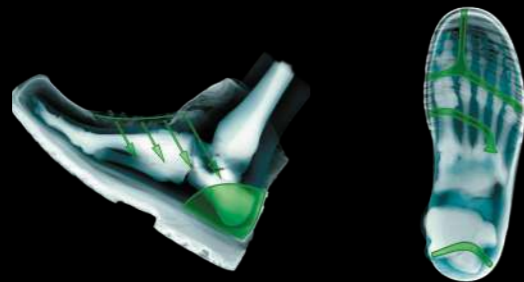


## WIDTH

Comfort when wearing shoes is affected not only by the length but also by the width of the shoe. WALKLINE® products are available in three widths (W, XW, XXW).

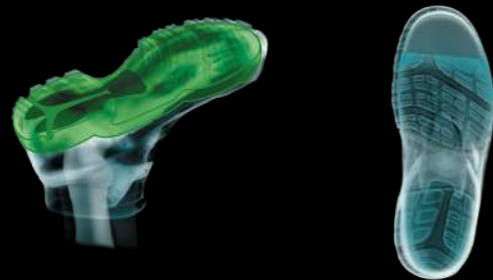
## FIXATION

The foot is fixed in the shoe by the heel, not by the instep. The result is a comfortable and straightforward step.



## SHOCK SYSTEM

The combination of heel support, tunnel system and soft midsole absorbs shocks. This reduces pressure on joints and distributes weight to eliminate negative impacts on the arch of the foot.



## FLEXLINE

The bend of the shoe is fully adapted to the foot bending zones so walking requires the least amount of energy.

## SOLE

An important parameter in safety shoes is good adhesion to the surface. Optimal properties are achieved by carefully choosing the materials and outsole profiles.

## TURBO XW B57

Low boots unisex



Upper material - water resistant full grain leather  
lining - Cool Comfort®

sizes: 38 - 48

width: XW

colour: B1

industry: heavy, construction,  
electrotechnical, light

standard: EN ISO 20345:2011



- > safety footwear S3
- > Tunnel system®
- > antibacterial system Odor control®
- > technology Walkline® Evo
- > protective composite toecap
- > anti-penetration composite midsole - Flex Guard®
- > SRC - slip resistant sole - dual density PU
- > E - energy absorption in the heel area
- > FO - resistance to fuel oil
- > Cl, HI - insulation against cold and heat
- > WRU - water resistant upper
- > A - antistatic
- > ESD - electro static discharge
- > full metal free



## ENGINE XW B59

Ankle boots unisex



Upper material - water resistant full grain leather  
lining - Cool Comfort®

sizes: 38 - 48

width: XW

colour: B1

industry: heavy, construction,  
electrotechnical, light

standard: EN ISO 20345:2011

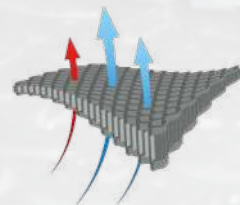


- > safety footwear S3
- > Tunnel system®
- > antibacterial system Odor control®
- > technology Walkline® Evo
- > protective composite toecap
- > anti-penetration composite midsole - Flex Guard®
- > SRC - slip resistant sole - dual density PU
- > E - energy absorption in the heel area
- > FO - resistance to fuel oil
- > Cl, HI - insulation against cold and heat
- > WRU - water resistant upper
- > A - antistatic
- > ESD - electro static discharge
- > full metal free



## ODOR CONTROL®

This patented antimicrobial system effectively combats footwear odor. This 100% organic method is based on a peppermint extract that naturally eliminates 99.9% of bacteria. It works at temperatures up to 240 °C.



### COOL COMFORT®

The Bata Cool Comfort® inner lining is a technically advanced material made from spaced knitted fabric. Thanks to the internal air ventilation, this structure provides a soft, dry and fresh feeling while walking, even when worn all day at work.

Photo: RIMECK® workwear: Work Trousers RANGER W03

### ▶ RADAR W<sup>B05</sup>

Low boots unisex



Upper material - water resistant full grain leather lining - Cool Comfort®

sizes: 36 - 48

width: W

colour: B1

industry: agriculture, heavy, construction, chemical, electrotechnical

standard: EN ISO 20345:2011

- > safety footwear S3
- > protective steel toecap
- > anti-penetration steel midsole
- > technology Walkline® 2.0
- > E - energy absorption in the heel area
- > SRC - slip resistant sole - TPU QuattroTech®
- > CI, HI - insulation against cold and heat
- > FO - resistance to fuel oil
- > A - antistatic
- > ESD - electro static discharge
- > WRU - water resistant upper



### ▶ VECTOR W<sup>B07</sup>

Ankle boots unisex



Upper material - water resistant full grain leather lining - Cool Comfort®

sizes: 36 - 48

width: W

colour: B1

industry: agriculture, heavy, construction, chemical, electrotechnical

standard: EN ISO 20345:2011

- > safety footwear S3
- > protective steel toecap
- > anti-penetration steel midsole
- > technology Walkline® 2.0
- > E - energy absorption in the heel area
- > SRC - slip resistant sole - TPU QuattroTech®
- > CI, HI - insulation against cold and heat
- > FO - resistance to fuel oil
- > A - antistatic
- > ESD - electro static discharge
- > WRU - water resistant upper



### ▶ SAXA XW<sup>B32</sup>

Low boots unisex



Upper material - water resistant nubuck leather, mesh lining - Cool Comfort®

sizes: 37 - 48

width: XW

colour: B3

industry: agriculture, heavy, chemical, electrotechnical, food, light, logistics, automotive

standard: EN ISO 20345:2012

- > safety footwear S2
- > protective steel toecap
- > anti-penetration steel midsole
- > Tunnel system®
- > E - energy absorption in the heel area
- > SRA - slip resistant sole - dual density PU
- > CI, HI - insulation against cold and heat
- > FO - resistance to fuel oil
- > A - antistatic
- > ESD - electro static discharge
- > WRU - water resistant upper



# BOA® FIT SYSTEM

A prompt and precise adjustment in millimetres. The BOA® system will adjust the shoe to the foot's width for a perfect comfort. Thanks to the special lacing system it is possible to tighten or loosen shoes at any time and it will stay safely fixed when used.

The wires are made of stainless steel with a nylon surface. Laces are abrasion resistant and long lasting.



## ▶ LEGEND XW<sup>B53</sup>

Low boots unisex



Upper material - mesh  
lining - Cool Comfort®

sizes: 38 - 48

width: XW

colour: B3

industry: electrotechnical, light,  
logistics, automotive

standard: EN ISO 20345:2011



- > antibacterial safety footwear S3
- > antibacterial system Odor control®
- > technology Walkline® Evo
- > Tunnel system®
- > BOA® lacing system
- > protective composite toecap
- > anti-penetration composite midsole - Flex Guard®
- > SRC - slip resistant sole - dual density PU
- > CI, HI - insulation against cold and heat
- > HRO - resistance to hot contact until 300 °C
- > E - energy absorption in the heel area
- > FO - resistance to fuel oil
- > A - antistatic
- > ESD - electro static discharge
- > undetectable



## ▶ SCORE XW<sup>B55</sup>

Ankle boots unisex



Upper material - microfiber  
lining - Cool Comfort®

sizes: 38 - 48

width: XW

colour: B1

industry: electrotechnical, light,  
logistics, automotive

standard: EN ISO 20345:2011



- > safety footwear S3
- > antibacterial system Odor control®
- > technology Walkline® Evo
- > protective composite toecap
- > anti-penetration composite midsole - Flex Guard®
- > SRC - slip resistant sole - dual density PU
- > E - energy absorption in the heel area
- > FO - resistance to fuel oil
- > WRU - water resistant upper
- > A - antistatic
- > ESD - electro static discharge
- > full metal free



## ▶ SIROCCO BLUE W<sup>B77</sup>

Ankle boots unisex



Upper material - cow split leather (Barton Print)  
lining - mesh

sizes: 35 - 47

width: W

colour: B1

industry: agriculture, heavy, construction, chemical, light, logistics,

standard: EN ISO 20345:2012



- > safety footwear S3
- > protective steel toecap
- > anti-penetration steel midsole
- > SRC - slip resistant sole - dual density PU
- > Tunnel system®
- > FO - resistance to fuel oil
- > A - antistatic





### ► BICKZ 736 W<sup>B27</sup>

Low boots unisex



Upper material - nubuck leather  
lining - Bickz Cool System®

sizes: 36 - 48

width: W

colour: B1

industry: construction, electrotechnical,  
light, logistics, automotive

standard: EN ISO 20345:2011



- > safety footwear S1P
- > protective composite toecap
- > anti-penetration composite midsole - Flex Guard®
- > Tunnel system®
- > E - energy absorption in the heel area
- > SRC - slip resistant sole - EVA rubber
- > HRO - resistance to hot contact until 300 °C
- > FO - resistance to fuel oil
- > A - antistatic
- > ESD - electro static discharge
- > full metal free



### ► BICKZ 733 W<sup>B28</sup>

Ankle boots unisex



Upper material - brushed nubuck leather  
lining - Bickz Cool System®

sizes: 36 - 48

width: W

colour: B1

industry: agriculture, construction,  
electrotechnical, automotive

standard: EN ISO 20345:2011



- > safety footwear S3
- > protective composite toecap
- > anti-penetration composite midsole - Flex Guard®
- > Tunnel system®
- > E - energy absorption in the heel area
- > SRC - slip resistant sole - EVA rubber
- > HRO - resistance to hot contact until 300 °C
- > FO - resistance to fuel oil
- > A - antistatic
- > ESD - electro static discharge
- > full metal free



### ► BICKZ 728 W<sup>B50</sup>

Low boots unisex



Upper material - water resistant nubuck leather  
lining - Bickz Cool System®

sizes: 36 - 48

width: W

colour: B3

industry: agriculture, heavy, construction,  
electrotechnical, logistics

standard: EN ISO 20345:2011



- > safety footwear S3
- > protective composite toecap
- > anti-penetration composite midsole - Flex Guard®
- > SRC - slip resistant sole - EVA/rubber
- > E - energy absorption in the heel area
- > HRO - resistance to hot contact until 300 °C
- > A - antistatic
- > WRU - water resistant upper
- > full metal free
- > ESD - electro static discharge





Photo: RIMECK® workwear: Work Trousers WOODY W01, Work Jacket WOODY W51

### ► BRIGHT 021 W B20

Low boots unisex



Upper material - microfiber, Nylon mesh  
lining - Cool Comfort®

sizes: 35-47

width: W

colour: B5

industry: food, light,  
logistics, automotive

standard: EN ISO 20345:2011



- > breathable safety footwear S1P
- > protective composite toecap
- > anti-penetration composite midsole - Flex Guard®
- > E - energy absorption in the heel area
- > SRC - slip resistant sole - EVA/rubber Vibram®
- > FO - resistance to fuel oil
- > A - antistatic
- > full metal free



### ► BRIGHT 031 W B21

Low boots unisex



Upper material - microfiber, Nylon mesh  
lining - Cool Comfort®

sizes: 35-47

width: W

colour: B1

industry: food, light,  
logistics, automotive

standard: EN ISO 20345:2011



- > breathable safety footwear S1P
- > protective composite toecap
- > anti-penetration composite midsole - Flex Guard®
- > E - energy absorption in the heel area
- > SRC - slip resistant sole - EVA/rubber Vibram®
- > FO - resistance to fuel oil
- > A - antistatic
- > full metal free



### ► BRIGHT 041 W B51

Low boots unisex



Upper material - microfiber, Nylon mesh  
lining - Cool Comfort®

sizes: 34-47

width: W

colour: B1

industry: food, light,  
logistics, automotive

standard: EN ISO 20345:2011



- > breathable safety footwear S1P
- > BOA® lacing system
- > protective composite toecap
- > anti-penetration composite midsole - Flex Guard®
- > E - energy absorption in the heel area
- > SRC - slip resistant sole - EVA/rubber Vibram®
- > FO - resistance to fuel oil
- > A - antistatic
- > undetectable



VIBRAM®

Italian outsoles with high abrasion resistance renowned for their excellent adhesion to wide range of surfaces. These outsoles were first used on climbing boots, replacing the usual leather outsoles with steel pins.





Photo: RIMECK® workwear: Shorts RANGER W06, T-shirt RESIST HEAVY R03, R04

### ► CURVE W<sup>B33</sup>

Low boots Women's



Upper material - microfibre  
lining - Cool Comfort®

sizes: 34 - 42

width: W

colour: B1

industry: agriculture, heavy, chemical,  
electrotechnical, food, light,  
logistics, automotive

standard: EN ISO 20345:2011

- > safety footwear S1P
- > protective composite toecap
- > anti-penetration composite midsole - Flex Guard®
- > E - energy absorption in the heel area
- > SRA - slip resistant sole - eva/rubber
- > CI, HI - insulation against cold and heat
- > HRO - resistance to hot contact until 300 °C
- > FO - resistance to fuel oil
- > A - antistatic
- > full metal free



### ► RIGA XW<sup>B22</sup>

Sandals unisex



Upper material - suede  
lining - mesh

sizes: 35 - 48

width: XW

colour: B3

industry: food, light,  
logistics, automotive

standard: EN ISO 20345:2011

- > breathable safety footwear S1
- > protective steel toecap
- > Tunnel system®
- > E - energy absorption in the heel area
- > SRA - slip resistant sole - dual density PU
- > FO - resistance to fuel oil
- > A - antistatic



### ► FALCON ESD W<sup>B76</sup>

Sandals unisex



Upper material - suede  
lining - mesh

sizes: 35 - 47

width: W

colour: B1

industry: electrotechnical, food, pharmaceutical,  
light, logistics, automotive

standard: EN ISO 20345:2011

- > breathable safety footwear S1
- > protective steel toecap
- > SRC - slip resistant sole - dual density PU
- > A - antistatic
- > ESD - electro static discharge





Photo: RIMECK® workwear: Work Trousers RANGER W03, T-shirt RESIST R01

### ► BICKZ 203 W B29

Low boots unisex



Upper material - water resistant full grain leather  
lining - Bickz Cool System®

sizes: 38 - 48

width: W

colour: B1

industry: agriculture, heavy,  
construction, automotive

standard: EN ISO 20345:2011



- > safety footwear S3
- > protective composite toecap
- > anti-penetration composite midsole - Flex Guard®
- > E - energy absorption in the heel area
- > SRC - slip resistant sole - EVA rubber
- > HRO - resistance to hot contact until 300 °C
- > FO - resistance to fuel oil
- > A - antistatic
- > WRU - water resistant upper



### ► BICKZ 204 W B30

Ankle boots unisex



Upper material - water resistant full grain leather  
lining - Bickz Cool System®

sizes: 38 - 48

width: W

colour: B1

industry: agriculture, heavy,  
construction, automotive

standard: EN ISO 20345:2011



- > safety footwear S3
- > protective composite toecap
- > anti-penetration composite midsole - Flex Guard®
- > E - energy absorption in the heel area
- > SRC - slip resistant sole - EVA rubber
- > HRO - resistance to hot contact until 300 °C
- > FO - resistance to fuel oil
- > A - antistatic
- > WRU - water resistant upper



### ► STOCKHOLM XW B26

Ankle boots unisex



Upper material - water resistant full grain leather  
lining - mesh

sizes: 37 - 48

width: XW

colour: B1

industry: agriculture, heavy,  
construction, chemical, food

standard: EN ISO 20345:2011



- > safety footwear S3
- > protective steel toecap
- > anti-penetration steel midsole
- > Tunnel system®
- > E - energy absorption in the heel area
- > SRA - slip resistant sole - dual density PU
- > FO - resistance to fuel oil
- > A - antistatic
- > WRU - water resistant upper





Photo: RIMECK® workwear: Work Trousers RANGER W03, T-shirt RESIST R01

### ► NORFOLK XW B25

Low boots unisex



Upper material - water resistant full grain leather  
lining - mesh

sizes: 35 - 48

width: XW

colour: B1

industry: agriculture, heavy,  
construction, chemical, food

standard: EN ISO 20345:2011



- > safety footwear S3
- > protective steel toecap
- > anti-penetration steel midsole
- > Tunnel system®
- > E - energy absorption in the heel area
- > SRA - slip resistant sole - dual density PU
- > FO - resistance to fuel oil
- > A - antistatic
- > WRU - water resistant upper



### ► CHARGE B78

Low boots unisex



Upper material - full grain leather FHC  
lining - mesh

sizes: 35 - 47

width: W

colour: B1

industry: chemical, food, pharmaceutical, light, logistics

standard: EN ISO 20347:2012



- > occupational footwear OB
- > SRC - slip resistant sole
- > A - antistatic
- > full metal free



### ► PANTHER W B79

Low boots unisex



Upper material - microfiber  
lining - mesh

sizes: 35 - 47

width: W

colour: B1

industry: chemical, food, pharmaceutical, light, logistics

standard: EN ISO 20347:2012



- > occupational footwear OB
- > SRC - slip resistant sole
- > A - antistatic
- > full metal free





The goal of Bata Industrials is to develop anatomically optimal footwear that meets the needs of the European market and suits the widest range of customers. The company invests into development, which is performed in its own research laboratories, followed by rigorous testing done in actual operation. Collaboration with the most important research centre for development and technology, SATRA, has enabled us to achieve a superior quality consistent with the strictest orthopaedic standards.

Shoes by RIMECK® fulfil the basic standards of the European regulation (EU) 2016/425, which refers to personal protective equipment and is marked CE. Personal protective equipment complies with the basic safety requirements and health protection and is certified in accordance with the technical standard EN ISO 20345:2011.

▶ **EN ISO 20345:2011 - SAFETY SHOES WITH TOECAP RESISTANT TO IMPACTS OF 200 J AND COMPRESSION FORCES OF 15 KN.**

- S1** S1 enclosed heel area, antistatic properties, energy absorption in the heel area, resistance to fuel oil
- S1P** S1P identical to S1 plus anti-penetration midsole
- S2** S2 identical to S1 plus water resistance and water absorption of upper material
- S3** S3 identical to S1P plus water resistance and water absorption of upper material

▶ **EN ISO 20347:2012 – WORK FOOTWEAR, WHICH PROTECT THE USER AGAINST INJURIES IN CASE OF ACCIDENTS, WITHOUT PROTECTIVE TOECAP.**

- OB** OB Basic requirements for work footwear (construction, ergonomics, slip resistant) and other additional requirements

▶ **MARKING OF OUTSOLE SLIP RESISTANCE**

- SRA** slip resistance on ceramic tile floor with NaLS<sup>2</sup>
- SRB** slip resistance on steel floor with glycerin
- SRC** [SRA+SRB] slip resistance on ceramic tile floor with NaLS<sup>2</sup> and on steel floor with glycerin



▶ **HEAT RESISTANT**



▶ **STEEL TOECAP**



▶ **TUNNEL SYSTEM®**



▶ **STEEL MIDSOLE**



▶ **COMPOSITE TOECAP**



▶ **OIL RESISTANT**



▶ **COMPOSITE MIDSOLE**



▶ **SHOCK ABSORPTION IN THE HEEL AREA**



▶ **METAL FREE**



▶ **UNDETECTABLE**

▶ **ESD**



ESD shoes discharge electrostatic charge and allow you to work in EPA areas (Electrostatic Protected Area) with electrostatically sensitive materials. The footwear has an electrical resistance of between 0.1 and 100 MΩ.

▶ **ANTISTATIC SHOES**

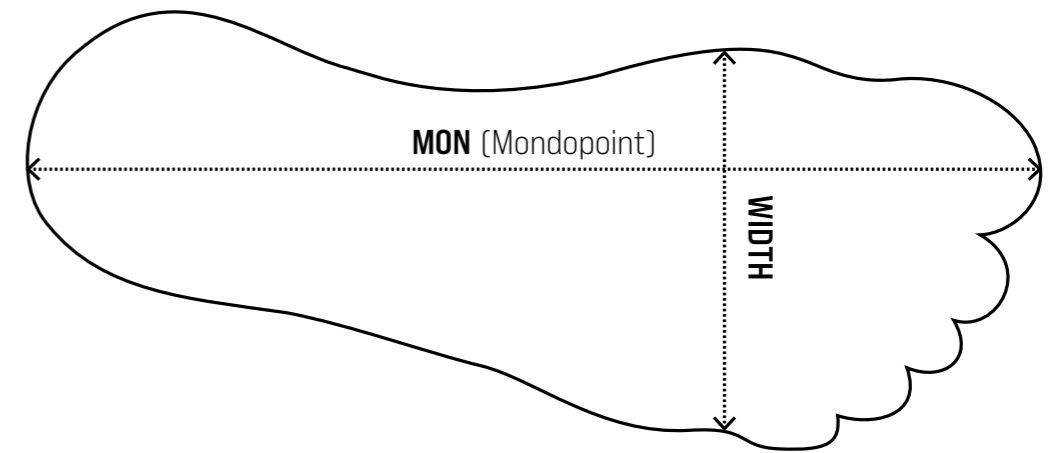


Shoes with electrical resistance greater than 100 kΩ and less than or equal to 1000 MΩ. They create the required resistance between the ground and the foot, but the shoes do not necessarily prevent electric shock.

▶ **SIZE CHART OF SAFETY FOOTWEAR AND WORKWEAR BATA INDUSTRIALS**

CONVERSION SIZE CHART																
EU (FR)	34	35	36	37	38	39	40	41	42	43	44	45	46	47	48	49
UK	1	2	3	4	5	6	6,5	7	8	9	9,5	10	11	12	13	14

SIZE CHART OF SAFETY FOOTWEAR BATA INDUSTRIALS																
EU (FR)	34	35	36	37	38	39	40	41	42	43	44	45	46	47	48	49
MON	210	217	225	232	240	247	255	262	270	277	285	292	300	307	315	322
ŠÍŘE W	86	<88	<90	<92	<94	<96	<98	<100	<102	<104	<106	<108	<110	<112	<114	<116
ŠÍŘE XW		<88	<90	<92	<94	<96	98-100	100-102	102-104	104-106	106-108	108-110	110-112	>112	>114	>116



**MON** metric system mondopoint specifies the length of the foot  
**WIDTH** the dimension measured in the widest part of the toes' joints

▶ **BARVY**

black	dark grey	blue
<b>B1</b>	<b>B3</b>	<b>B5</b>



**MALFINI**

A.S.



**BATA INDUSTRIALS**  
THE SAFETY SHOE

**RIMECK®**